

# CONQUER

## Fuse Blocks

# Specification Guide Codes:

**A= Item Number**

**B= Insertion & Extraction Force**

**C= Dielectric Strength For 60 Sec**

• Special Design Also Available. For Details Please Contact Factory.

• Use UL Approved Materials • Low Cost • Low Contact Resistance • Flame Retardant.

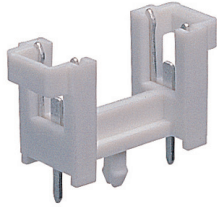
**D= Suitable Rated Current**

**E= Insulation Resistance At500VDC**

**F= Temperature Rise**

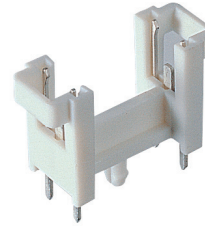
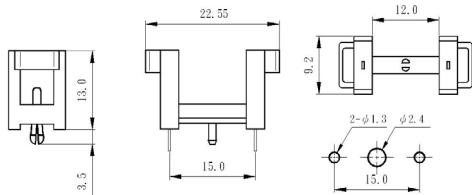
**G= Voltage Drop**

### FUSE BLOCKS FOR 5x20mm FUSES



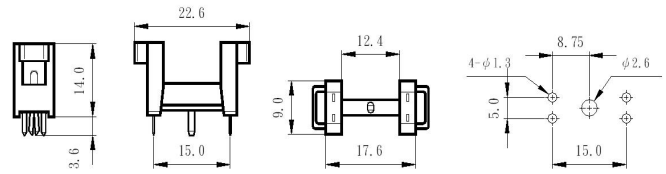
#### CQ-2001

**B:** 1Kg.Min.  
**C:** AC2000V Min.  
**D:** 6.3A250V  
**E:** 100MΩ Min  
**F:** 50°C Max.  
**G:** 20mV Max.



#### CQ-200M

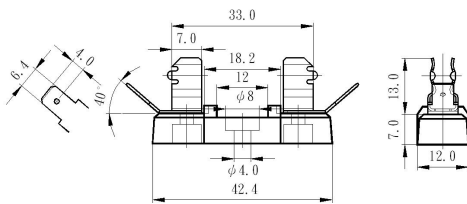
**B:** 1Kg.Min.  
**C:** AC2000V Min.  
**D:** 6.3A250V  
**E:** 100MΩ Min  
**F:** 50°C Max.  
**G:** 20mV Max.



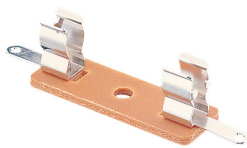
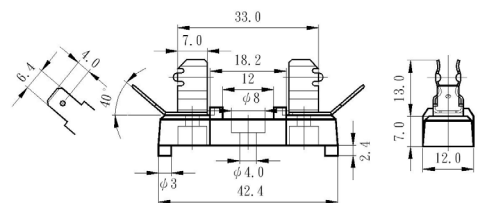
### FUSE BLOCKS FOR 1/4x1-1/4 (6.3x32mm) FUSES



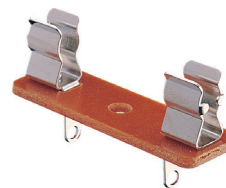
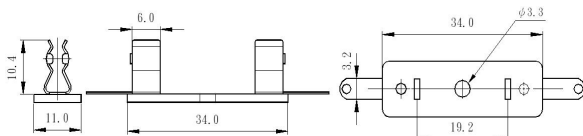
**CQ-201N** **RoHS**  
**B:** 1.5Kg.Min.  
**C:** AC3000V Min.  
**D:** 30A250V  
**E:** 500MΩ Min  
**F:** 60°C Max.  
**G:** 20mV Max.  
 Terminal Shape: I, F, L, R, S



**CQ-201N-A**  
**B:** 1.5Kg.Min.  
**C:** AC3000V Min.  
**D:** 30A250V  
**E:** 500MΩ Min  
**F:** 60°C Max.  
**G:** 20mV Max.  
 Terminal Shape: I, F, L, R, S



**CQ-201H**  
**B:** 1Kg.Min.  
**C:** AC500V Min.  
**D:** 10A250V  
**E:** 100MΩ Min  
**F:** 50°C Max.  
**G:** 20mV Max.



**CQ-201V**  
**B:** 1Kg.Min.  
**C:** AC500V Min.  
**D:** 10A250V  
**E:** 100MΩ Min  
**F:** 50°C Max.  
**G:** 20mV Max.

