



### EAF

#### Quick Acting Low Breaking Capacity

- 5Ø x 20 mm ( 0.197 x 0.787 inch )
- Ampere Rating: 50mA to 20 A
- Voltage Rating: 60V and less

#### • Electrical Characteristics:



Rated Current	1.5 In		4 In	10 In
	Min	Max	Max	Max
50mA - 20A	60 min	30 min	300ms	20ms



### AUE

#### Normal Blow Glass Tube Fuses

- 10.3Øx38.1 mm (13/32x1-1/2 inch)
- Ampere Rating: 500mA to 80 A
- Voltage Rating: 250V and less
- **Electrical Characteristics:**  
135% - 1 Hour, **Maximum**, A≤30  
150% - 1 Hour, **Maximum**, A>30  
200% - 30 Seconds, **Maximum**
- Caps: Nickel Plating
- Option: Gold Plated Available
- Equivalent AGU and 5AG Fuse

Rated Current	Approvals
30A and less	
30.1A~60A	



### AUB

#### Normal Blow Ceramic Tube Fuses

- 10.3Øx38.1 mm (13/32x1-1/2 inch)
- Ampere Rating: 500mA to 80A
- Voltage Rating: 600V and less
- **Electrical Characteristics:**  
135% - 1 Hour, **Maximum**  
200% - 120 Seconds, **Maximum**
- Caps: Nickel Plating
- Option: Gold Plated Available
- Standards: UL, CSA 30A and less



### UAF

#### Quick Acting Low Breaking Capacity

- 6.3Ø x 32 mm (1/4 x 1-1/4 inch)
- Ampere Rating: 50mA to 35 A
- Voltage Rating: 60V and less

#### • Electrical Characteristics:

Rated Current	1.5 In	2.1 In	4 In	10 In
	Min	Max	Max	Max
50mA - 35A	60 min	20sec	0.5sec	100ms



### JUE

#### Normal Blow Glass Tube Fuses

- 10.3Øx38.1 mm (13/32x1-1/2 inch)
- Ampere Rating: 500mA to 60 A
- Voltage Rating: 250V and less
- **Electrical Characteristics:**  
160% - 1 Hour, **Maximum**  
200% - 120 Seconds, **Maximum**
- Caps: Gold Plated Available
- **Option:** Ceramic Tube Also Available
- Model No: **JUB**

#### • Approvals:

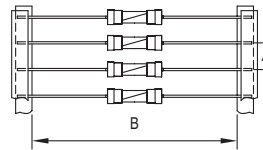


1A to 30A and less

#### TAPE/REEL IS AVAILABLE FOR ALL AXIAL LEAD FUSES:

FUSE TYPE	A (Pitch)	B (Inside Tape Spacing)
2.8 x 7.1 mm	5mm	53 mm
3.18 x 7.1 mm	5mm	53 mm
3.6 x 10 mm	10mm	56.5 mm
4.5 x 14.5 mm	10 mm	56.5 mm
5 x 20 mm	10 mm	56.5 mm
6 x30 mm	10 mm	56.5 mm
1/4 x 1-1/4 Inch	10 mm	56.5 mm

- To Order, Specify "TR" After Part Number, e.g. **GST-A 1A 250V TR**



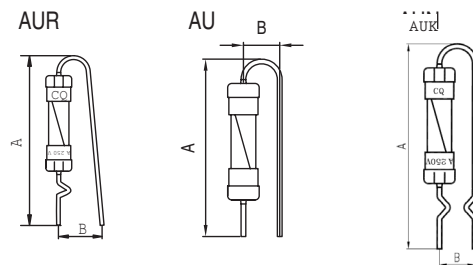
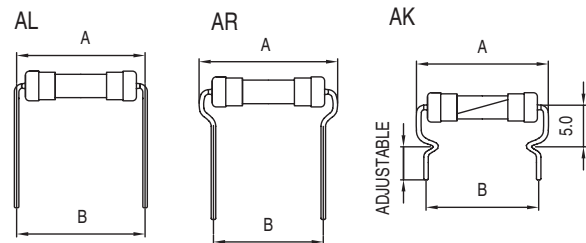
REEL PACKAGING

#### RADIAL LEAD FORMING TABLE:

FUSE TYPE	3x10mm (mm)		4.5x14.5mm (mm)		5x20mm (mm)		6x30mm (mm)		1/4x1-1/4Inch (mm)	
	A	B	A	B	A	B	A	B	A	B
AL	13.8	13.8	18	18	25	25	35	35	36	36
AR			18	15	25	20	35	30	36	32
AK			18	16	26	21.5	36	32	37	34
AU	24	6			31.5	5.8				
AUR	23.5	6.5			32.6	6.5				
AUK	20.5	5.0			31.3	6.0				

- To Order, Specify "AL" or "AR" or "AK" or "AU", e.g. **GST-AL 1A 250V**

#### • Different Values of A & B Available, Please Contact Factory.



#### HEAT SHRINK SLEEVE TUBING:

- Pig-Tail Fuses Are Available With Heat-Shrink Tubing Covering The Fuse Body.
- Tubing Prevents Contact With Live Parts, Prevents Shorting To Circuit Traces, And Permits Safe Installation In Tight Spaces.
- Insulating Tubing With UL Listed And CSA Certified Approval.

