



## SAW Resonators

**RoHS Compliant**  
Directive 2002/95/EC

**REACH Compliant**  
(15 SVHCs)  
Regulation (EC)  
No. 1907/2006

**TS16949: 2002**  
Certified

### • Dimension

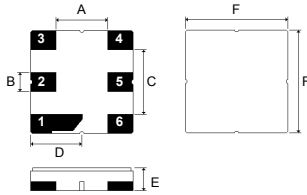
#### 3.0x3.0mm

Pin No.	Function*
2	Input / output
5	Output / input
1,3,4,6	Ground

\* Pin function may vary

Dimension	Value
A	1.50
B	0.60
C	1.80
D	1.50
E	1.10
F	3.00

Unit: mm  
Tolerance: ±0.3mm



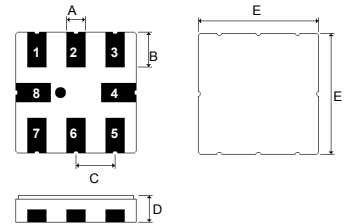
#### 3.8x3.8mm (8-terminal)

Pin No.	Function*
1	Input
2	Input
5	Output
6	Output
3, 7	To be grounded
4, 8	Case ground

\* Pin function may vary

Dimension	Value
A	0.60
B	1.00
C	1.27
D	1.50
E	3.80

Unit: mm  
Tolerance: ±0.3mm



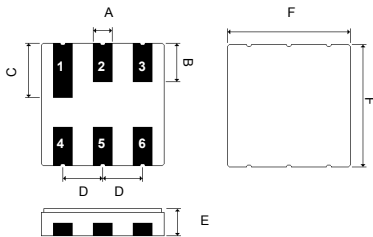
#### 3.8x3.8mm (6-terminal)

Pin No.	Function*
2	Input / output
5	Output / input
1,3,4,6	Ground

\* Pin function may vary

Dimension	Value
A	0.60
B	1.00
C	1.60
D	1.27
E	1.20
F	3.80

Unit: mm  
Tolerance: ±0.3mm



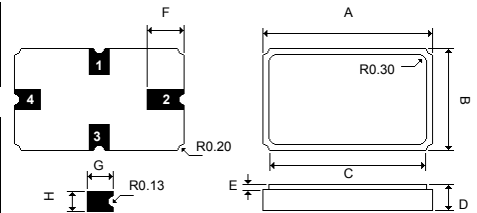
#### 5.0x3.5mm

Pin No.	Function*
1	Input / output
2	Case ground
3	Output / input
4	Case ground

\* Pin function may vary

Dimension	Value
A	5.00
B	3.50
C	4.70
D	1.25
E	0.25
F	1.20
G	0.80
H	0.50

Unit: mm  
Tolerance: ±0.3mm



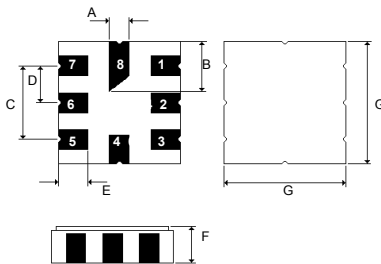
#### 5.0x5.0mm

Pin No.	Function*
1	Input
5	Output
2,7	Input ground
3,6	Output ground
4,8	Case ground

\* Pin function may vary

Dimension	Value
A	0.60
B	2.08
C	2.54
D	1.27
E	1.20
F	1.35
G	5.00

Unit: mm  
Tolerance: ±0.3mm



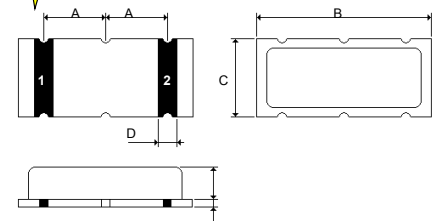
#### 7.5x3.5mm

Pin No.	Function*
1	Input / output
2	Output / input

\* Pin function may vary

Dimension	Value
A	2.50
B	7.50
C	3.50
D	1.00
E	1.35
F	0.65

Unit: mm  
Tolerance: ±0.3mm





### TO-39

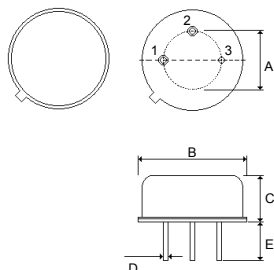
Pin No.	Function*
1	Input
2	Output
3	Ground

\* Pin function may vary

Dimension	
A	5.08
B	9.30
C	3.45
D	0.45±0.20
E	3.00±0.20

Unit: mm

Tolerance: ±0.3mm



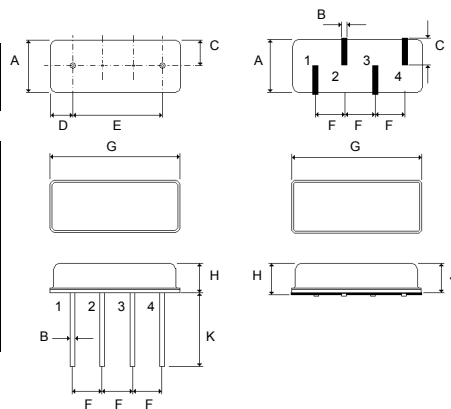
### F-11 / F-11 SMD

Pin No.	Function*
1	Input / output
2,3	Ground
4	Output / input

\* Pin function may vary

Dimension	F-11 / F-11 SMD	
	F-11	F-11 SMD
A	4.50±0.5	4.50±0.5
B	0.45±0.2	0.60±0.05
C	2.25±0.2	2.45±0.2
D	1.70±0.2	-
E	7.60±0.2	-
F	2.54±0.2	2.54±0.2
G	11.00±0.5	11.00±0.5
H	3.20±0.3	4.10±0.3
J	-	3.40±0.3
K	6.3±0.5	-

Unit: mm



**F-11**

**F-11 SMD**

### CW-2

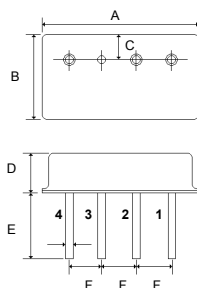
Pin No.	Function*
1	1 <sup>st</sup> channel
2	2 <sup>nd</sup> channel
3	Ground
4	Common

\* Pin function may vary

Dimension	
A	12.0
B	7.50
C	2.00
D	3.80
E	5.00
F	2.54

Unit: mm

Tolerance: ±0.3mm





### ● One-Port SAW Resonators for Automotive Electronics and Remote Controls

Part Number	Center Frequency (MHz)	Insertion Loss (dB)	Package
SR224M70A00T9A00B0	224.7	1.4	TO-39
SR265M00A00T9A00B0	265.0	1.8	TO-39
SR288M00A00T9A00B0	288.0	1.5	TO-39
SR293M12A00S2A00E0	293.125	1.6	5.0x3.5mm
SR295M00A00T9A00B0	295.0	1.5	TO-39
SR300M00A00S5A00E0	300.0	1.3	5.0x5.0mm
SR300M00A00S5A01E0	300.0	1.5	5.0x5.0mm
SR303M75A00T9A00B0	303.75	1.5	TO-39
SR303M82A00S2A00E0	303.825	1.2	5.0x3.5mm
SR303M82A00T9A00B0	303.825	1.5	TO-39
SR303M82A00T1A00E0	303.825	1.3	F-11
SR303M82A00S5A00E0	303.825	1.4	5.0x5.0mm
SR303M87A00T9A00B0	303.875	1.5	TO-39
SR303M87A00T1A00E0	303.875	1.3	F-11
SR303M87A00S2A00E0	303.875	1.6	5.0x3.5mm
SR304M30A00T9A00B0	304.3	1.4	TO-39
SR303M87A00S5A00E0	303.875	1.4	5.0x5.0mm
SR303M94A00S2A00E0	303.948	1.5	5.0x3.5mm
SR303M94A00S5A00E0	303.948	1.3	5.0x5.0mm
SR304M30A00T2A00E0	304.3	1.5	F-11 SMD
SR304M30A00S2A00E0	304.3	1.5	5.0x3.5mm
SR305M67A00T9A00B0	305.675	1.8	TO-39
SR306M00A00T1A00E0	306.0	1.2	F-11
SR308M50A00T9A00B0	308.5	1.2	TO-39
SR309M00A00T9A00B0	309.0	1.3	TO-39
SR310M00A00T9A00B0	310.0	1.4	TO-39
SR310M00A00S2A00E0	310.0	1.1	5.0x3.5mm
SR310M00A00S5A00E0	310.0	1.3	5.0x5.0mm
SR311M00A00T9A00B0	311.0	1.5	TO-39
SR311M00A00S5A00E0	311.0	1.5	5.0x5.0mm
SR311M06A00S2A00E0	311.063	1.3	5.0x3.5mm
SR311M06A00S5A00E0	311.063	1.3	5.0x5.0mm
SR312M00A00T9A00B0	312.0	1.3	TO-39
SR312M00A00S2A00E0	312.0	1.3	5.0x3.5mm
SR312M00A00S5A00E0	312.0	1.2	5.0x5.0mm
SR314M50A00T9A00B0	314.5	1.5	TO-39
SR314M50A00S5A00E0	314.5	1.5	F-11
SR314M50A00S2A00E0	314.5	1.3	5.0x3.5mm
SR314M50A00S5A01E0	314.5	1.2	5.0x5.0mm
SR314M50A00T2A00E0	314.5	1.6	F-11 SMD
SR315M00A00T9A00B0	315.0	1.5	TO-39
SR315M00A00T1A00E0	315.0	1.5	F-11
SR315M00A00S2A00E0	315.0	1.3	5.0x3.5mm
SR315M00A00S5A00E0	315.0	1.4	5.0x5.0mm
SR315M00A00S3A00E0	315.0	1.5	3.0x3.0mm
SR315M00A00S7A00E0	315.0	1.3	3.8x3.8mm (6)
SR315M00A00T2A00E0	315.0	1.6	F-11 SMD
SR315M50A00T9A00B0	315.5	1.2	TO-39
SR315M50A00S2A00E0	315.5	1.5	5.0x3.5mm
SR315M50A00S5A00E0	315.5	1.5	5.0x5.0mm
SR315M50A00S7A00E0	315.5	1.5	3.8x3.8mm (6)

Part Number	Center Frequency (MHz)	Insertion Loss (dB)	Package
SR316M02A00T9A00B0	316.025	1.2	TO-39
SR316M65A00T9A00B0	316.65	1.3	TO-39
SR316M80A00T9A00B0	316.8	1.3	TO-39
SR316M80A00T1A00E0	316.8	1.3	F-11
SR318M00A00T9A00B0	318.0	1.0	TO-39
SR318M00A00T1A00E0	318.0	1.0	F-11
SR318M00A00S2A00E0	318.0	1.2	5.0x3.5mm
SR318M00A00S5A00E0	318.0	1.5	5.0x5.0mm
SR319M00A00S2A00E0	319.5	1.3	5.0x3.5mm
SR319M50A00S5A00E0	319.5	1.3	5.0x5.0mm
SR320M00A00T9A00B0	320.0	1.5	TO-39
SR324M00A00S5A00E0	324.0	1.5	5.0x5.0mm
SR325M00A00T9A00B0	325.0	1.6	TO-39
SR325M00A00T1A00E0	325.0	1.6	F-11
SR330M00A00T9A00B0	330.0	1.2	TO-39
SR330M00A00T1A00E0	330.0	1.0	F-11
SR333M00A00T9A00B0	333.0	1.3	TO-39
SR333M00A00T1A00E0	333.0	1.3	F-11
SR340M00A00S5A00E0	340.0	1.3	5.0x5.0mm
SR345M00A00T9A00B0	345.0	1.4	TO-39
SR345M00A00S2A00E0	345.0	1.5	5.0x3.5mm
SR345M00A00S5A00E0	345.0	1.5	5.0x5.0mm
SR350M00A00T9A00B0	350.0	1.3	TO-39
SR350M00A00S5A00E0	350.0	1.5	5.0x5.0mm
SR360M00A00T9A00B0	360.0	1.5	TO-39
SR360M00A00T1A00E0	360.0	1.2	F-11
SR360M00A00S5A00E0	360.0	1.3	5.0x5.0mm
SR372M00A00S2A00E0	372.0	1.2	5.0x3.5mm
SR372M50A00S2A00E0	372.5	1.2	5.0x3.5mm
SR372M50A00S5A00E0	372.5	1.4	5.0x5.0mm
SR380M00A00T1A00E0	380.0	1.2	F-11
SR390M00A00T9A00B0	390.0	1.2	TO-39
SR390M00A00T1A00E0	390.0	1.4	F-11
SR390M00A00S5A00E0	390.0	1.2	5.0x5.0mm
SR390M00A00S5A00E0	390.0	1.3	5.0x5.0mm
SR392M85A00S5A00E0	392.85	1.3	5.0x5.0mm
SR395M00A00T9A00B0	395.0	1.5	TO-39
SR395M50A00T9A00B0	395.5	1.2	TO-39
SR395M50A00T1A00E0	395.5	1.3	F-11
SR396M00A00T9A00B0	396.0	1.3	TO-39
SR403M55A00T9A00B0	403.55	1.2	TO-39
SR403M55A00S2A00E0	403.55	1.3	5.0x3.5mm
SR403M55A00S5A00E0	403.55	1.3	5.0x5.0mm
SR403M96A00S2A00E0	403.966	1.3	5.0x3.5mm
SR403M96A00S5A00E0	403.966	1.5	5.0x5.0mm
SR407M30A00T9A00B0	407.3	1.3	TO-39
SR417M50A00T9A00B0	417.5	1.4	TO-39
SR417M50A00S5A00E0	417.5	1.5	5.0x5.0mm
SR418M00A00T9A00B0	418.0	1.5	TO-39
SR418M00A00T1A00E0	418.0	1.6	F-11
SR418M00A00S2A00E0	418.0	1.2	5.0x3.5mm



Continued from the preceding page →

### • One-Port SAW Resonators for Automotive Electronics and Remote Controls

Part Number	Center Frequency (MHz)	Insertion Loss (dB)	Package
SR418M00A00S5A00E0	418.0	1.6	5.0x5.0mm
SR419M95A00T1A00E0	419.95	1.4	F-11
SR423M22A00T9A00B0	423.22	1.3	TO-39
SR423M22A00T1A00E0	423.22	1.5	F-11
SR423M22A00S2A00E0	423.22	1.6	5.0x3.5mm
SR423M22A00S5A00E0	423.22	1.6	5.0x5.0mm
SR426M00A00S5A00E0	426.0	1.5	5.0x5.0mm
SR426M55A00S5A00E0	426.55	1.5	5.0x5.0mm
SR430M50A00T9A00B0	430.5	2.0	TO-39
SR430M50A00T1A00E0	430.5	2.2	F-11
SR430M65A00T9A00B0	430.65	2.0	TO-39
SR432M00A00T1A00E0	432.0	1.2	F-11
SR432M92A00T9A00B0	432.92	1.3	TO-39
SR432M92A00S5A00E0	432.92	1.3	5.0x5.0mm
SR433M38A00S5A00E0	433.385	1.3	5.0x5.0mm
SR433M42A00T9A00B0	433.42	1.8	TO-39
SR433M42A00S2A00E0	433.42	1.3	5.0x3.5mm
SR433M42A00S5A00E0	433.42	1.5	5.0x5.0mm
SR433M42A00S3A00E0	433.42	1.6	3.0x3.0mm
SR433M85A00T1A00E0	433.85	1.6	F-11
SR433M92A00T9A01B0	433.92	1.8	TO-39
SR433M92A01T9A02B0	433.92	1.5	TO-39
SR433M92A01T9A03B0	433.92	2.6	TO-39
SR433M92A00T9A04B0	433.92	1.3	TO-39
SR433M92A00T9A05B0	433.92	1.1	TO-39
SR433M92A00T1A01E0	433.92	1.3	F-11
SR433M92A00T1A02E0	433.92	1.5	F-11
SR433M92A00S2A00E0	433.92	1.5	5.0x3.5mm
SR433M92A00S5A01E0	433.92	1.2	5.0x5.0mm
SR433M92A00S5A02E0	433.92	2.0	5.0x5.0mm
SR433M92A00S5A03E0	433.92	2.5	5.0x5.0mm
SR433M92A00S3A00E0	433.92	1.6	3.0x3.0mm
SR433M92A00S7A00E0	433.92	1.5	3.8x3.8mm (6)
SR433M92A00S8A00E0	433.92	1.5	3.8x3.8mm (8)
SR433M92A00T2A00E0	433.92	1.8	F-11 SMD
SR434M40A00T9A00B0	434.4	1.3	TO-39
SR434M42A00T9A00B0	434.42	1.3	TO-39
SR434M42A00S2A00E0	434.42	1.8	5.0x3.5mm
SR434M42A00S5A00E0	434.42	2.0	5.0x5.0mm
SR435M80A00T9A00B0	435.8	1.3	TO-39
SR440M80A00T9A00B0	440.8	2.5	TO-39
SR441M20A00T9A00B0	441.2	2.7	TO-39
SR441M20A00T1A00E0	441.2	2.8	F-11
SR447M69A00S2A00E0	447.699	1.3	5.0x3.5mm
SR447M69A00S5A00E0	447.699	1.0	5.0x5.0mm
SR447M72A00T9A00B0	447.725	1.5	TO-39
SR447M72A00S2A00E0	447.725	1.6	5.0x3.5mm
SR479M50A00T9A00B0	479.5	1.3	TO-39
SR479M50A00T1A00E0	479.5	1.5	F-11

Part Number	Center Frequency (MHz)	Insertion Loss (dB)	Package
SR499M50A00S5A00E0	499.5	1.2	5.0x5.0mm
SR622M08A00T9A00B0	622.08	1.5	TO-39
SR643M75A00S5A00E0	643.75	1.5	5.0x5.0mm
SR800M00A00S7A00E0	800.0	1.0	3.8x3.8mm (6)
SR809M00A00T9A00B0	809.0	1.2	TO-39
SR809M00A00S5A00E0	809.0	1.3	5.0x5.0mm
SR809M00A00S7A00E0	809.0	0.9	3.8x3.8mm (6)
SR854M00A00S7A00E0	854.0	1.2	3.8x3.8mm (6)
SR857M30A00T9A00B0	857.3	1.0	TO-39
SR857M65A00S2A00E0	857.65	1.2	5.0x3.5mm
SR863M00A00T9A00B0	863.0	1.0	TO-39
SR868M00A00T9A00B0	868.0	1.2	TO-39
SR868M00A00S5A00E0	868.0	1.5	5.0x5.0mm
SR868M30A00T9A00B0	868.3	1.2	TO-39
SR868M30A00S5A00E0	868.3	1.5	5.0x5.0mm
SR868M30A00S3A00E0	868.3	1.5	3.0x3.0mm
SR868M35A00T9A00B0	868.35	1.2	TO-39
SR868M35A00T1A00E0	868.35	1.3	F-11
SR868M35A00S5A00E0	868.35	1.6	5.0x5.0mm
SR868M35A00S8A00E0	868.35	1.0	3.8x3.8mm (8)
SR868M35A00S3A00E0	868.35	1.5	3.0x3.0mm
SR868M35A00S2A00E0	868.35	1.7	5.0x3.5mm
SR868M75A00S5A00E0	868.75	1.8	5.0x5.0mm
SR868M95A00T9A00B0	868.95	1.3	TO-39
SR868M95A00S5A00E0	868.95	1.8	5.0x5.0mm
SR868M95A00S3A00E0	868.95	1.6	3.0x3.0mm
SR902M30A00S5A00E0	902.3	1.3	5.0x5.0mm
SR902M50A00S5A00E0	902.5	1.3	5.0x5.0mm
SR904M30A00T9A00B0	904.3	2.8	TO-39
SR904M30A00S2A00E0	904.3	3.4	5.0x3.5mm
SR905M80A00S5A00E0	905.8	1.5	5.0x5.0mm
SR910M00A00S5A00E0	910.0	1.2	5.0x5.0mm
SR912M00A00T9A00B0	912.0	1.3	TO-39
SR912M00A00S5A00E0	912.0	1.5	5.0x5.0mm
SR914M50A00S5A00E0	914.5	1.8	5.0x5.0mm
SR915M00A00T9A00B0	915.0	1.6	TO-39
SR915M00A00S2A00E0	915.0	1.6	5.0x3.5mm
SR915M00A00S5A00E0	915.0	1.8	5.0x5.0mm
SR915M00A00S3A00E0	915.0	1.3	3.0x3.0mm
SR916M50A00T9A00B0	916.5	1.2	TO-39
SR916M50A00S2A00E0	916.5	1.5	5.0x3.5mm
SR916M50A00S5A00E0	916.5	1.5	5.0x5.0mm
SR925M00A00S5A00E0	925.0	2.4	5.0x5.0mm
SR930M50A00T9A00B0	930.5	1.3	TO-39
SR950M00A00S5A00E0	950.0	1.3	5.0x5.0mm
SR980M00A00T9A00B0	980.0	1.3	TO-39
SR980M00A00S2A00E0	980.0	1.5	5.0x3.5mm
SR980M00A00S5A00E0	980.0	1.5	5.0x5.0mm

- Other frequencies and specifications are also available upon request, please consult with our sales representatives.

- Available tolerance: ±40KHz, ±75KHz, ±100KHz, ±150KHz, ±250KHz (some tolerance levels may only be available for specific frequencies)



### ● Two-Port SAW Resonators

Part Number	Center Frequency (MHz)	Insertion Loss (dB)	Package
SR217M25A00T9B00B0	217.25	4.5	TO-39
SR284M00A00T9B00B0	284.0	5.0	TO-39
SR303M82A00S5B00E0	303.825	5.0	5.0x5.0mm
SR310M00A00T9B00B0	310.0	5.5	TO-39
SR315M00A00T9B00B0	315.0	5.0	TO-39
SR315M00A00T1B00B0	315.0	5.0	F-11
SR315M00A00S5B00E0	315.0	5.0	5.0x5.0mm
SR380M00A00T9B00B0	380.0	6.0	TO-39
SR384M05A00T9B00B0	384.05	6.0	TO-39
SR392M00A00T9B00B0	392.0	5.5	TO-39
SR403M55A00T9B00B0	403.55	6.0	TO-39
SR403M55A00S5B00E0	403.55	5.0	5.0x5.0mm
SR418M00A00T9B00B0	418.0	6.0	TO-39
SR418M00A00S5B00E0	418.0	6.0	5.0x5.0mm
SR423M22A00T9B00B0	423.22	6.0	TO-39
SR433M42A00T9B00B0	433.42	6.0	TO-39

Part Number	Center Frequency (MHz)	Insertion Loss (dB)	Package
SR433M92A00T9B00B0	433.92	6.0	TO-39
SR433M92A00T1B00B0	433.92	6.0	F-11
SR433M92A00S5B00E0	433.92	6.0	5.0x5.0mm
SR433M92A00S2B00E0	433.92	6.0	5.0x3.5mm
SR780M00A00S5B00E0	780.0	6.5	5.0x5.0mm
SR824M25A00T9B00B0	824.25	6.5	TO-39
SR865M00A00T9B00B0	865.0	6.0	TO-39
SR868M30A00T9B00B0	868.3	6.0	TO-39
SR868M30A00S5B00E0	868.3	6.0	5.0x5.0mm
SR868M35A00S5B00E0	868.35	6.5	5.0x5.0mm
SR873M00A00S5B00E0	873.0	7.0	5.0x5.0mm
SR906M00A00T9B00B0	906.0	6.5	TO-39
SR915M00A00S5B00E0	915.0	6.5	5.0x5.0mm
SR916M50A00S5B00E0	916.5	6.5	5.0x5.0mm
SR934M00A00T9B00B0	934.0	7.0	TO-39

- Other frequencies and specifications are also available upon request, please consult with our sales representatives.

- Available tolerance:  $\pm 40\text{KHz}$ ,  $\pm 75\text{KHz}$ ,  $\pm 100\text{KHz}$ ,  $\pm 150\text{KHz}$ ,  $\pm 250\text{KHz}$  (some tolerance levels might only be available for specific frequencies)

### ● SAW Resonators for RF Modulator

Center Frequency (MHz)	Insertion Loss (dB)	Tolerance (KHz)	Application(s)	Package
49.74 / 57.74	5.0 max.	$\pm 80$	PAL 1/2	CW-2
65.74 / 77.24	4.0 max.	$\pm 80$	PAL 3/4	
77.24 / 85.24	4.0 max.	$\pm 80$	PAL 4/5	
55.24 / 61.24	5.0 / 4.0 max.	$\pm 80$	NTSC 2/3	
61.24 / 67.24	4.0 max.	$\pm 80$	NTSC 3/4	
55.24 / 62.24	4.0 max.	$\pm 80$	PAL BG 3/4	
46.24 / 57.24	6.0 / 4.0 max.	$\pm 80$	A 0/1	
91.24 / 97.24	3.2 max.	$\pm 80$	J 1/2	

- Other frequencies and specifications are also available upon request, please consult with our sales representatives.



### • SAW Resonators for CATV Modulator

Center Frequency (MHz)	Tolerance (KHz)	Insertion Loss (dB)	Package
49.75	±20, ±50, ±80	5.0 max.	CW-2
57.75	±20, ±50, ±80	4.0 max.	
65.75	±20, ±50, ±80	4.0 max.	
77.25	±20, ±50, ±80	4.0 max.	
85.25	±20, ±50, ±80	4.0 max.	
168.25	±20, ±50, ±80	4.0 max.	
176.25	±20, ±50, ±80	4.0 max.	
184.25	±20, ±50, ±80	4.0 max.	
192.25	±20, ±50, ±80	4.0 max.	
200.25	±20, ±50, ±80	4.0 max.	
208.25	±20, ±50, ±80	4.0 max.	
216.25	±20, ±50, ±80	4.0 max.	
535.25	±250	2.5 max.	
607.25	±250	2.5 max.	
615.25	±250	2.5 max.	
687.25	±250	2.5 max.	
112.25	±20, ±50, ±80	4.0 max.	CW-2
120.25	±20, ±50, ±80	4.0 max.	
128.25	±20, ±50, ±80	4.0 max.	
136.25	±20, ±50, ±80	4.0 max.	
144.25	±20, ±50, ±80	4.0 max.	
152.25	±20, ±50, ±80	4.0 max.	
160.25	±20, ±50, ±80	4.0 max.	
224.25	±20, ±50, ±80	4.0 max.	
232.25	±20, ±50, ±80	4.0 max.	
240.25	±20, ±50, ±80	4.0 max.	
248.25	±20, ±50, ±80	4.0 max.	
87.75	±20, ±50, ±80	4.0 max.	CW-2
95.75	±20, ±50, ±80	4.0 max.	
103.75	±20, ±50, ±80	4.0 max.	
115.25	±20, ±50, ±80	4.0 max.	
123.25	±20, ±50, ±80	4.0 max.	
206.25	±20, ±50, ±80	4.0 max.	
214.25	±20, ±50, ±80	4.0 max.	
222.25	±20, ±50, ±80	4.0 max.	
230.25	±20, ±50, ±80	4.0 max.	
238.25	±20, ±50, ±80	4.0 max.	
246.25	±20, ±50, ±80	4.0 max.	
254.25	±20, ±50, ±80	4.0 max.	
254.625	±20, ±50, ±80	4.0 max.	
258.625	±20, ±50, ±80	4.0 max.	
262.625	±20, ±50, ±80	4.0 max.	
266.625	±20, ±50, ±80	4.0 max.	
270.625	±20, ±50, ±80	4.0 max.	
274.625	±20, ±50, ±80	4.0 max.	
278.625	±20, ±50, ±80	4.0 max.	
282.625	±20, ±50, ±80	4.0 max.	
286.625	±20, ±50, ±80	4.0 max.	
290.625	±20, ±50, ±80	4.0 max.	
294.625	±20, ±50, ±80	4.0 max.	
298.625	±20, ±50, ±80	4.0 max.	

Center Frequency (MHz)	Tolerance (KHz)	Insertion Loss (dB)	Package
150.25	±20, ±50, ±80	4.0 max.	CW-2
158.25	±20, ±50, ±80	4.0 max.	
166.25	±20, ±50, ±80	4.0 max.	
174.25	±20, ±50, ±80	4.0 max.	
182.25	±20, ±50, ±80	4.0 max.	
190.25	±20, ±50, ±80	4.0 max.	
198.25	±20, ±50, ±80	4.0 max.	
262.25	±20, ±50, ±80	4.0 max.	
270.25	±20, ±50, ±80	4.0 max.	
278.25	±20, ±50, ±80	4.0 max.	
286.25	±20, ±50, ±80	4.0 max.	
294.25	±20, ±50, ±80	4.0 max.	

- Other frequencies and specifications are also available upon request, please consult with our sales representatives.



### ● SAW Resonators for FM Broadcasting

Center Frequency (MHz)	Tolerance (KHz)	Insertion Loss (dB)	Package	Center Frequency (MHz)	Tolerance (KHz)	Insertion Loss (dB)	Package
86.5	±60 ±80	4.0 max.	CW-2	108.5	±60 ±80	4.0 max.	CW-2
92.35	±60 ±80			108.7	±60 ±80		
98.6	±60 ±80			109.1	±60 ±80		
98.65	±60 ±80			109.6	±60 ±80		
98.7	±60 ±80			110.1	±60 ±80		
99.1	±60 ±80			110.4	±60 ±80		
99.3	±60 ±80			110.7	±60 ±80		
99.5	±60 ±80			110.9	±60 ±80		
99.9	±60 ±80			111.1	±60 ±80		
100.7	±60 ±80			111.2	±60 ±80		
101.15	±60 ±80			111.4	±60 ±80		
101.3	±60 ±80			111.5	±60 ±80		
101.7	±60 ±80			111.8	±60 ±80		
101.9	±60 ±80			111.9	±60 ±80		
102.1	±60 ±80			112.2	±60 ±80		
102.4	±60 ±80			112.7	±60 ±80		
102.5	±60 ±80			113.1	±60 ±80		
103.5	±60 ±80			113.2	±60 ±80		
103.9	±60 ±80			113.3	±60 ±80		
104.2	±60 ±80			113.4	±60 ±80		
104.5	±60 ±80			113.7	±60 ±80		
104.7	±60 ±80			113.9	±60 ±80		
104.9	±60 ±80			114.1	±60 ±80		
105.3	±60 ±80			114.2	±60 ±80		
105.5	±60 ±80			114.6	±60 ±80		
106.4	±60 ±80			114.8	±60 ±80		
106.5	±60 ±80			115.2	±60 ±80		
106.7	±60 ±80			115.5	±60 ±80		
106.8	±60 ±80			115.8	±60 ±80		
107.1	±60 ±80			116.3	±60 ±80		
107.3	±60 ±80			116.7	±60 ±80		
107.5	±60 ±80			116.9	±60 ±80		
107.7	±60 ±80			117.2	±60 ±80		
108.0	±60 ±80			118.0	±60 ±80		
108.2	±60 ±80	118.1	±60 ±80				
108.4	±60 ±80	118.7	±60 ±80				

- Other frequencies and specifications are also available upon request, please consult with our sales representatives.