

WTS-8



### SPECIFICATIONS

CONTACT RATING: 50mA, 12VDC  
 ELECTRICAL LIFE: 1,000,000 cycles  
 CONTACT RESISTANCE: 100mΩ max.  
 INSULATION RESISTANCE: 100MΩ min. 500VDC  
 DIELECTRIC STRENGTH: 250VAC/1 min.



INDEX

TOGGLE

ROCKER

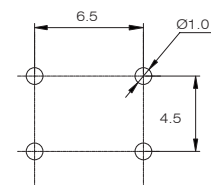
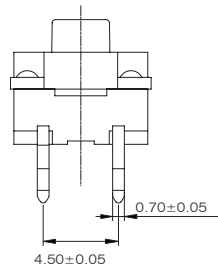
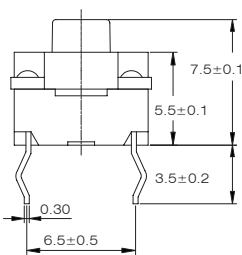
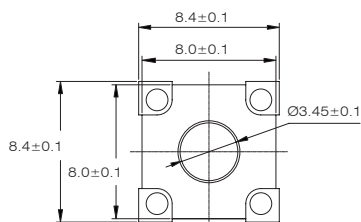
SLIDE

PUSH BUTTON

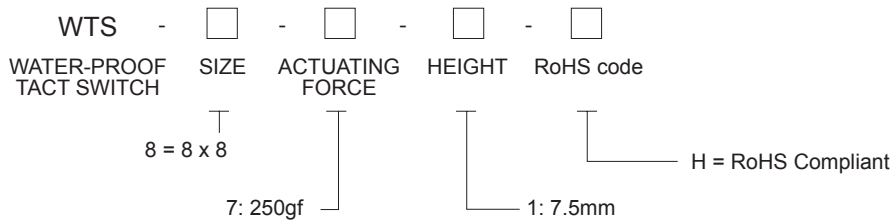
DIP

TACT

### PCB LAYOUT



### HOW TO ORDER



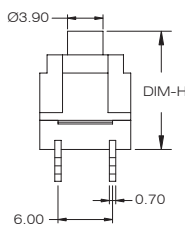
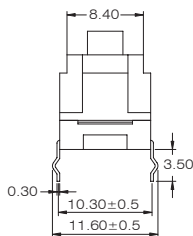
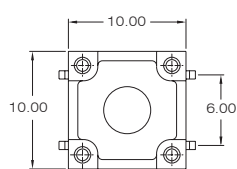
WTS-10



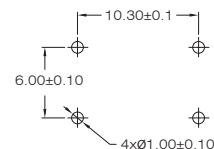
### SPECIFICATIONS

RATING: 50mA, 12VDC  
 ELECTRICAL LIFE: 1,000,000 cycles  
 CONTACT RESISTANCE: 100mΩ max  
 INSULATION RESISTANCE: 100MΩ min. 500VDC  
 DIELECTRIC STRENGTH: 500VAC/1 min  
 OPERATING FORCE: 160±50g, 260±70g

### P.C.B. LAYOUT



33.7mm
22.75mm
13mm
DIM-H



### HOW TO ORDER

