

SPECIFICATIONS

ELECTRICAL LIFE : 500,000 cycles min, for
 ELTSMW-69, 67, 65, 64
 100,000 cycles min. for
 ELTSMW-66, 68

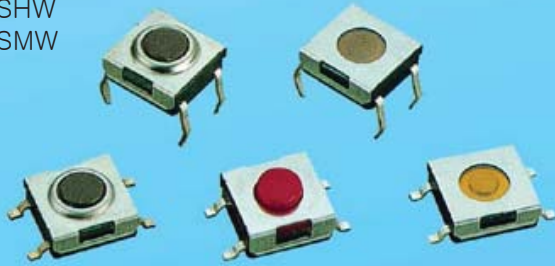
CONTACT RESISTANCE: 100mΩ max
 INSULATION RESISTANCE: 100MΩ min. 500VDC
 DIELECTRIC STRENGTH: 250VAC/1 min
 OPERATION FORCE:
 360±90gf, Transparent(T), ELTSMW-65,67,69
 260±70gf, Red(R), ELTSMW-64, 65, 67, 69
 180±50gf, Brown(N), ELTSMW-64, 65, 67, 69
 160±50gf, Brown(N), ELTSMW-66
 160±50gf, Silver(S), ELTSMW-68
 STORAGE TEMPERATURE: -30°C to +80°C
 CONTACT ARRANGEMENT: 1 pole 1 throw

MATERIALS

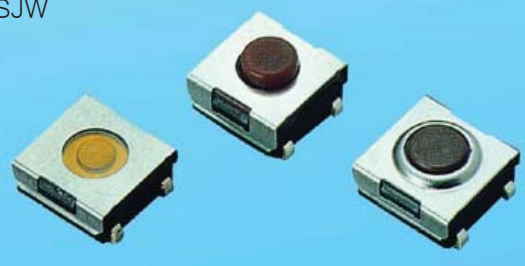
COVER – Stainless steel.
 BASE – UL94V-0 Nylon High-Temp. Thermoplastic(Black)
 CONTACT DISC – Phosphor bronze with silver cladding
 TERMINAL – Brass with silver cladding

ITEM NO.	ELTSMW-66N ELTSMW-66N	ELTSMW-68S ELTSMW-68S	ELTSMW-69,67,65,64N (R) 69, 67T
STEM	High-Temp. Thermoplastic Nylon UL 94V-0 Color: Brown(N),160gf	None	None
ADHESIVE TAPE	Resin-based	Resin-Based	None
METAL STEM	Brass with Nickel plated	Brass with Nickel Plated Color: Silver (S), 160gf	None
SEALED RUBBER	None	None	Silicone Rubber

ELTSMW
ELTSMW

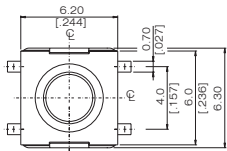


ELTSMW

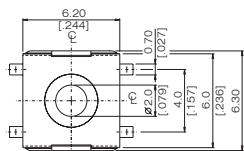


DIMENSIONS

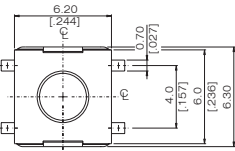
ELTSMW-66



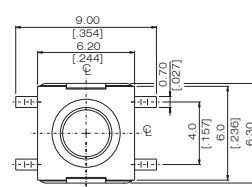
ELTSMW-68



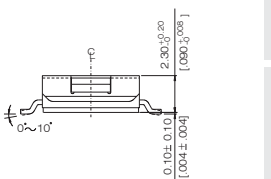
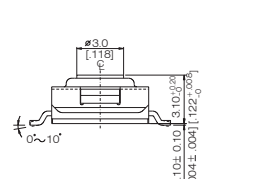
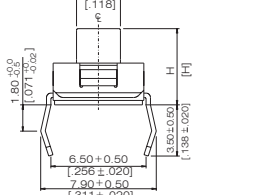
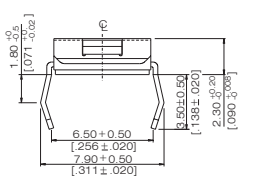
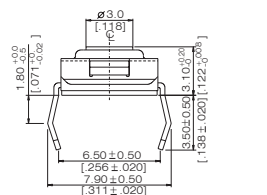
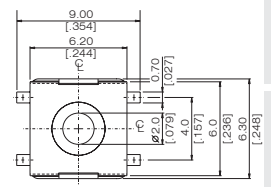
ELTSMW-69,67,65,64



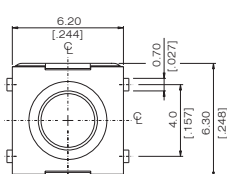
ELTSMW-66



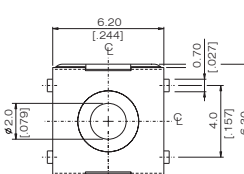
ELTSMW-68



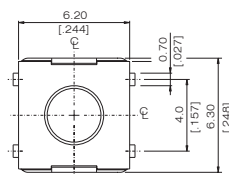
ELTSMW-66



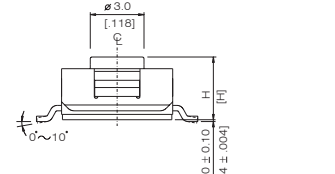
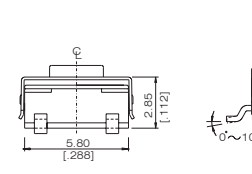
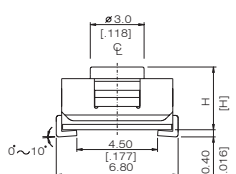
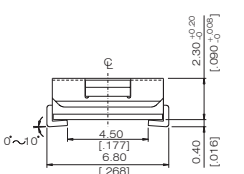
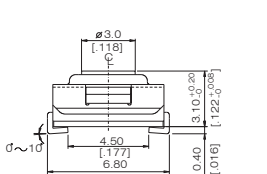
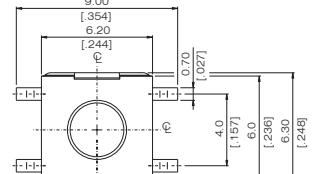
ELTSMW-68



ELTSMW-69,67,65,64



ELTSMW-69,67,65,64



INDEX

TOGGLE

ROCKER

SLIDE

PUSH-BUTTON

DIP

TACT

HOW TO ORDER

ELTS □ W - □ □ □ - □ □

RoHS code
H = RoHS Compliant

Package Style:

- = Bulk
- B = Tube
- T/R = Tape & Reel

Color of Stem For Operating Force:

- ▲ N= Brown, 160gf(66N), 180gf(69N, 67N, 65N, 64N)
- S= Salmon, 160gf
- R= Red, 260gf
- T= Transparent, 360gf (69T, 67T, 65T)

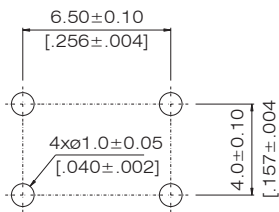
Dimension H:

- 64= 4.5mm (N, R)
- 65= 3.5mm (N, R, T)
- 66= 3.1mm (N)
- 67= 5.2mm (N, R, T)
- 68= 2.3mm (S)
- 69= 3.8mm (N, R, T)

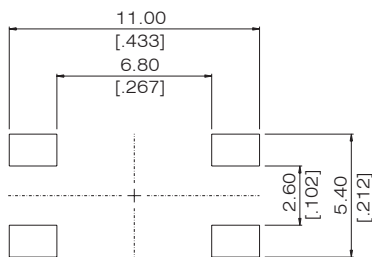
- H= Through Hole Terminals
- M= Surface Mounting Terminals
- J = J Type Surface Mounting

P.C.B. LAYOUT

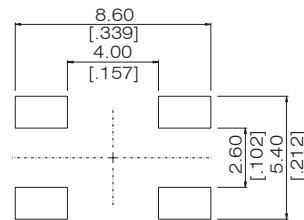
ELTSHW-6



ELTSMW-6



ELTSJW-6



CIRCUIT

